

AUTOMATIC SLAB TONG

DATA SHEET

DESCRIPTION OF OPERATION

The automatic slab tong is designed to lift either one or several slabs simultaneously, in a horizontal position. The tongs are robustly engineered for heavy duty application to meet the severe demands of steel mills. The crane operator controls the entire lifting process from the crane cabin by placing the tong above the centre of the slab. The suspension assembly is designed to accommodate standard crane hooks. The suspension is fixed by pull pins. Customized suspensions on request.



FEATURES

- Operated entirely from the crane cab without the assistance
- Easy access to gripping pads and grease points for all bearings
- All tongs are individually designed and calculated
- Manufactured in accordance with worldwide recognised norms (e.g. EN, ISO) and safety standards

CUSTOMER BENEFITS

- No assistance of personnel on the floor required
- Increased operational safety
- Quick handling time
- Easy to maintain and exchange of wear parts
- Minimum inherent weight
- Long working life
- Product in line with the latest international machine guidelines

AVAILABLE OPTIONS

- Rotating unit
- Suspension custom-made
- Suspension for free hook leading - no floor personnel required
- Height adjusting tables (manual, motorized)

AUTOMATIC SLAB TONG

PRODUCT INFORMATION

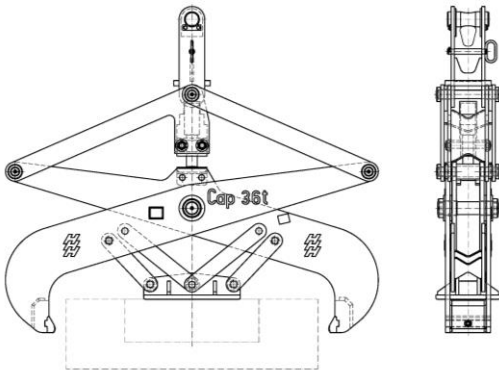
TYPICAL SLAB SPECIFICATIONS *

Length	from 300 mm to	13'000 mm
Width	from 200 mm to	2'000 mm
Thickness	up to	300 mm
Number of slabs		several
Temperature of slab	up to	1'000°C
Weight of slab	up to	75 t

*) Tongs for all slab dimensions are available according to customer requirements.

Number of slabs depending on height and weight

EXAMPLE DRAWING



Heppenstall slab tongs are designed to accommodate custom slabs of all dimensions with or without rotating unit.

3D VIEW



Other slab tongs available:

- Slab tong dragline
- Slab tong hoist operated
- Slab tong hydraulic
- Slab tong motorized
- Slab tong at stacker

All lifting equipment complies with the latest machine guidelines and the new EU/EN standards. Heppenstall use material of high quality and ultrasonic tested steel plates according EN10204 for safety-related components.