

TELESCOPIC BEAM

DATA SHEET

DESCRIPTION OF OPERATION

The versatile telescopic beam is designed to lift various loads by single, or multiple attachment points. The length-wise moving beam is either actuated by a motor, a hydraulic actuator or manually. Loads, e.g. bundles and rolls, may be attached to the beam by straps, chains, ropes, or magnets; magnets directly connected to its beam by flexible (e.g. chain-) suspensions. The beams are robustly engineered for heavy duty application to meet the severe demands of steel- and paper mills, or distribution- and service centres. The beam itself is suspended to the crane trolley either by hooks or sheave blocks. Customized suspensions on request.

AVAILABLE OPTIONS

- Suspension custom-made; the beam may be equipped with various kinds of suspensions such as sheave blocks with a straight connection to the crane trolley
- Rotating unit
- Electrical fittings
- Electrical provisions for fully-automatic lifting process - radio control for the beam
- Integrated magnets
- Integrated vacuum lifters
- Loose slings, chains, ropes



FEATURES

- All beams are individually designed
- Easily disassembling gripping pads
- Easily accessible grease nipples are provided for all bearings
- Suspension for free hook leading. With this suspension, the crane hook can be fixed without floor personnel.
- Manufactured in accordance with worldwide recognised norms (e.g. EN, ISO) and safety standards

CUSTOMER BENEFITS

- No assistance of personnel on the floor required
- Increased operational safety
- Quick handling time
- Easy to maintain and exchange of wear parts
- Long working life
- Produced in line with international machine guidelines

TELESCOPIC BEAM

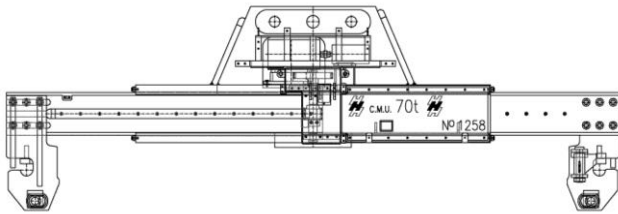
PRODUCT INFORMATION

TYPICAL BEAM SPECIFICATIONS *

Capacity	from 1.0 t to	350 t	Tailor-made solutions >1'000 t
Lengths	up to	30 m	
Drive	Motorized, telescopic, spindle	In line with requirement	Customised
Lifting devise	Chain, magnets, vacuum	In line with requirement	Customised
Environment	from -50°C to	900°C	

*) Heppenstall builds beams to accommodate customer's requirements.

EXAMPLE DRAWING



Heppenstall beams are designed to accommodate custom loads with single or multiple attachment points.

SAMPLE PICTURES



Other beams available:

- Fixed lifting beam
- Ladle beam

All lifting equipment complies with the latest machine guidelines and the new EU/EN standards. Heppenstall use material of high quality and ultrasonic tested steel plates according EN10204 for safety-related components.